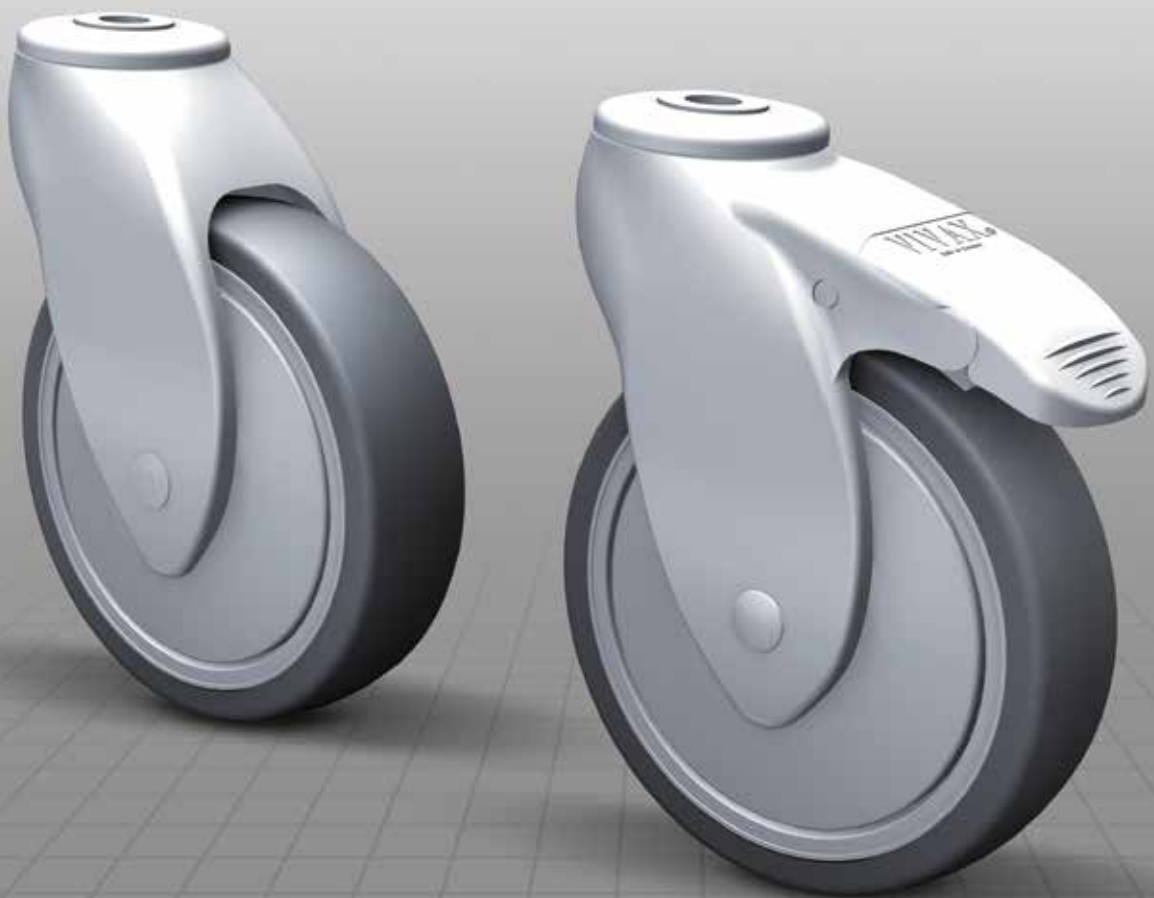




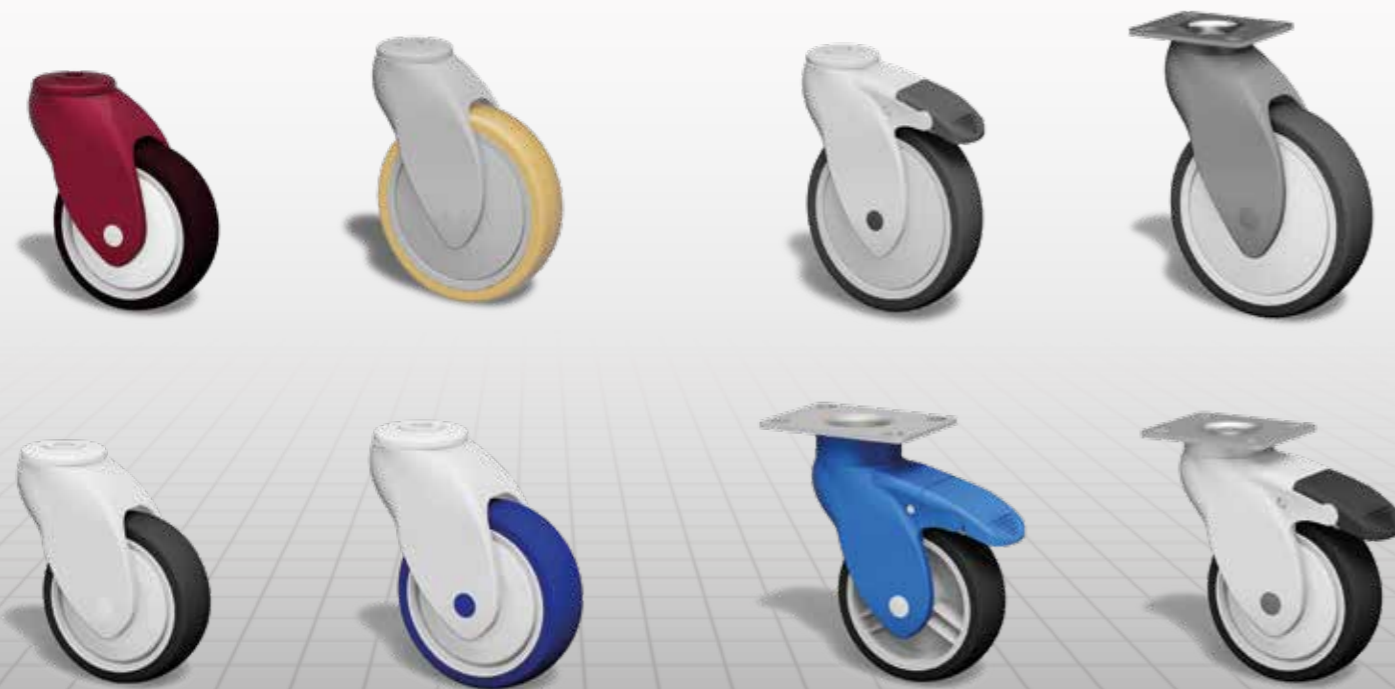
# VIVAX<sup>®</sup> Castors

the better choice  
Made in Germany





## THE NEW **VIVAX**® CASTORS



**VIVAX® castors the better choice**  
**Made in Germany**

### THE ALTERNATIVE TO METAL CASTORS

Whether cleaning machines, shopping trolleys or standardized castors for the medical and dining area, the selecting the right castor is a difficult matter. Material, storage, surface and wheel diameter influence the individual properties. Soil conditions, Cleaning properties, durability and resilience - no matter where something to be moved, always face other requirements.

*RESISTANCE, SWING DURATION CONDUCT OR THE LOOK: NYLON CASTORS WILL MASTER THESE REQUIREMENTS*

### HIGH STRENGTH

Glass fiber reinforced nylon provides the **VIVAX®** reel for high strength and almost unlimited stability. It makes the castor even at high temperatures lasting against all currently known detergents and Disinfectants, alkalis diluted Acids, oils, lubricants, alcohols and gasoline. This „built-in“ corrosion protection requires no additional processing in the production - is the **VIVAX®** in contrast to ordinary metal rollers significantly more environmentally friendly.

### PERFECT swivel PROPERTIES

Remember optimum swing characteristics speaking of constantly used cars indispensable. Guaranteed at the **VIVAX®** A deep groove ball bearings, precision in the fork head many years of service with unlimited function. The good damping properties and contribute to the low weight in addition to comfortable running behavior at.

### ATTRACTIVE LOOK

Not just a matter of taste: Straight in areas frequented by the public as the catering or health-care is the attractive appearance of the castors very important. This is not just about the attractive shape or color, but also a „neat“ appearance. Scratched and unkempt look tarnished castors and unhygienic. By dyed plastic castors are of course not from scratches immune, but they are far less visible than metal castors.

### CUSTOMIZATION

The available color palette is extremely extensive. If a special color not be available, a corresponding painting of the castor and simply permanently realized. Individual imprints as you complete the distinctive logo corporate identity.

### CONFORMING DESIGN

With all design claim is compliance with certain standards such as standard kitchen Castors and lock an indispensable criterion of our work.

### QUALITY MADE IN GERMANY

The **VIVAX®** castors are in our own work specifically for your needs manufactured. For you this means a great quality and quick, easy delivery.

Castor series

**VIVAX®**

Combine swivel head, wheels und fittings individually, suitable for your demands

**Wheel series 0**  
Polypropylen lighth grey

For soft floors

load capacity with series 0:  
**70 kg**



ball bearing plain bearing

30C 30G

**Wheel series 1**  
Hub made from Polypropylen lighth grey  
Tyre TPE 87° Shore (A) dark grey

Standard tyre suitable for most floor types without oil leaking under pressure

load capacity with series 1:  
**70 kg**



ball bearing plain bearing

31C 31G

**Wheel series 6**  
Hub made from Polypropylen lighth grey  
Tyre TPE 50° Shore (A) dark grey

Soft tyre for floors with edges and interstices  
Shock and noise absorbing

load capacity with series 6:  
**60 kg**



ball bearing plain bearing

36C 36G

Ø75



**Swivel castor**

Plain bearing as swivel bearing  
Optimized design through FEM made from Polyamid 6



**KML**

**Swivel castor with wheel brake**

Plain bearing as swivel bearing  
Optimized design through FEM made from Polyamid 6



**KMF**

**KMF-31C-GM10x20**



**Fitting types with dimensions**

**S11x31**



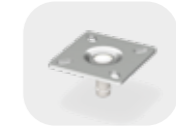
**Stem for sockets**  
with bore Ø11 mm  
free length 31 mm

**GM10x20**



**Threaded stem**  
M10x20  
Spanner section SW17

**P60**



**Plate 60x60**  
thickness 3 mm,  
zinc galvanised  
bolt hole spacing  
38x38/48x48 for  
screw M6

**VIVAX® section views**

Castor series **VIVAX®**

Technical details at a look  
• assembly  
• types of bearings  
• dimensions



section view  
swivel bearing with  
grip ring



section view  
plain bearing



section view  
ball bearing

**VIVAX® technical informations**



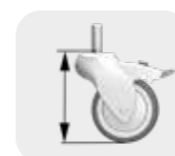
75



86,5



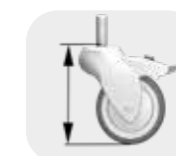
32



105



110



105



25

Castor series

**VIVAX®**

Combine swivel head, wheels und fittings individually, suitable for your demands

**Wheel series 0A**  
Polypropylen light grey

**Conductive <math>< 10^4 \Omega</math>**  
For soft floors

load capacity with wheel series 0: **70 kg**

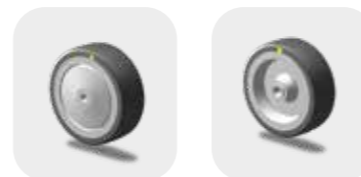


ball bearing plain bearing

**Wheel series 1A**  
Hub made from Polypropylen light grey  
Tyre TPE 87° Shore (A) dark grey

**Conductive <math>< 10^4 \Omega</math>**  
Standard tyre for most floor types without oil leaking under pressure

load capacity with wheel series 1A: **70 kg**



ball bearing plain bearing

30CA 30GA **31CA** 31GA Ø75

**Swivel castor**

Plain bearing as swivel bearing  
Optimized design through FEM  
made from Polyamid 6



**KMAL**

**Swivel castor with wheel brake**

Plain bearing as swivel bearing  
Optimized design through FEM  
made from Polyamid 6



**KMAF**

**KMAF-31CA-GM10x20**



**S11x31**



**Fitting types with dimensions**

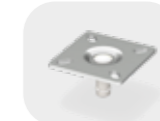
**Stem for sockets**  
with bore Ø11 mm  
free length 31 mm

**GM10x20**



**Threaded stem**  
M10x20  
Spanner section SW17

**P60**



**Plate 60x60**  
thickness 3 mm,  
zinc galvanised  
bolt hole spacing  
38x38/48x48 for  
screw M6

**VIVAX® section views**

Castor series **VIVAX®**  
Technical details at a look:

- assembly
- types of bearings
- dimensions



section view swivel bearing with grip ring



section view plain bearing



section view ball bearing

**VIVAX® technical informations**



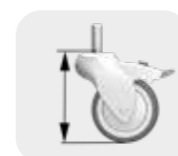
75



86,5



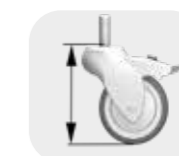
32



105



110



105



25



Castor series

**VIVAX®**

Combine swivel head, wheels und fittings individually, suitable for your demands

**Wheel series 0**  
Polypropylen lighth grey

For soft floors

**Wheel series 1**  
Hub made from Polypropylen lighth grey  
Tyre TPE 87° Shore (A) dark grey

Standard tyre suitable for most floor types without oil leaking under pressure

**Wheel series 6**  
Hub made from Polypropylen light grey  
Tyre TPE 50° Shore (A) dark grey

Soft tyre for floors with edges and interstices  
Shock and noise absorbing



load capacity with series 0:  
**70 kg**



ball bearing plain bearing

load capacity with wheel series 1:  
**70 kg**



ball bearing plain bearing

load capacity with wheel series 6:  
**60 kg**



ball bearing plain bearing

30CN 30G **31CN** 31G 36CN 36G Ø75

**Swivel castor**

Plain bearing as swivel bearing  
Optimized design through FEM  
made from Polyamid 6



**NKML**

**Swivel castor with wheel brake**

Plain bearing as swivel bearing  
Optimized design through FEM  
made from Polyamid 6



**NKMF**

**NKMF-31CN-GM10x20**



**S11x31**



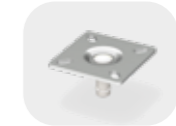
**Stem for sockets**  
with bore Ø11 mm  
free length 31 mm

**GM10x20**



**Threaded stem**  
M10x20  
Spanner section SW17

**P60**



**Plate 60x60**  
thickness 3 mm,  
zinc galvanised  
bolt hole spacing  
38x38/48x48 for  
screw M6

**VIVAX® section views**

Castor series **VIVAX®**  
Technical details at a look:

- assembly
- types of bearings
- dimensions



section view swivel bearing with grip ring



section view plain bearing



section view ball bearing

**VIVAX® technical informations**



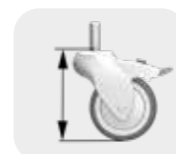
75



86,5



32



105



110



105



25

Castor series

**VIVAX®**

Combine swivel head, wheels and fittings individually, suitable for your demands

**Wheel series 0**  
Polypropylen light grey

For soft floors

load capacity with wheel series 0: **100 kg**



ball bearing plain bearing

**Wheel series 1**  
Hub made from light grey Polypropylen  
Tyre TPE 87° Shore (A) dark grey  
Standard tyre suitable for most floor types without oil leaking under pressure

load capacity with wheel series 1: **100 kg**



ball bearing plain bearing

**Wheel series 4**  
Hub made from Polyamid 6 light grey  
resistance TPU 95° Shore (A) dark grey  
High load capacity and extreme abrasion

load capacity with wheel series 4: **150 kg**



ball bearing plain bearing

**Wheel series 6**  
Hub made from Polypropylen light grey  
Tyre TPE 50° Shore (A) dark grey  
Soft tyre for floors with edges and interstices Shock and noise absorbing

load capacity with wheel series 6: **70 kg**



ball bearing plain bearing



40C	40G	41C	41G	44C	44G	46C	46G	Ø100
50C	50G	<b>51C</b>	51G	54C	54G	56C	56G	Ø125

**Swivel castor**

Precision ball bearing  
DIN 625 6203 2RS as swivel bearing  
Body made from Polyamid 6 GF30



**KSL**

**Swivel castor with brake**

Precision ball bearing  
DIN 625 6203 2RS as swivel bearing  
Total lock for wheel and swivel  
Body made from Polyamid 6 GF30



**KSF**

**Swivel castor with direction lock**

With swivel locking in 180° position  
Precision ball bearing  
DIN 625 6203 2RS as swivel bearing  
Body made from Polyamid 6 GF30



**KSD**



**KSF - 51C - L12**

**Available fittings with dimensions**

**L10**



**Back hole**  
bore Ø10,2 mm

**L12**



**Back hole**  
bore Ø 12,2 mm

**P77**



**Plate 77x67**  
thickness 3 mm, zinc chromatised bolt hole spacing 61,5/56x51,5/46,4 for screw M8

**P95**



**Plate 95x70**  
thickness 3 mm, zinc chromatised bolt hole spacing 72x52/75 for screw M8, 75x50 for screw M10

**Z28**



**Stem Ø28x45**  
zinc chromatised cross hole M6 19 mm from tube seat

**X45**



**Expanding stem**  
For round tubes dia. from Ø18 to Ø 35 mm, for square tubes size from 18x18 mm do 40x40 mm inside

**R...**

**VIVAX® section views**

Castor series **VIVAX®**  
Technical details at a look:

- assembly
- types of bearings
- dimensions



section view swivel head with precision ball bearing type 6203 2RS DIN 625



section view wheel with plain bearing



section view wheel with ball bearing type 6202 ZZ

**VIVAX® technical informations**



100	103	43	135	140	32
125	120	46	160	170	32

www.colson-rollen.com

Castor series

**VIVAX®**

Combine swivel head, wheels und fittings individually, suitable for your demands

**Wheel series 0A**  
Polypropylen light grey

Conductive <math><10^4\Omega</math>  
for soft floors

load capacity with wheel serie 0A: **100 kg**



ball bearing plain bearing

**Wheel series 1A**  
Hub made from light grey Polypropylen,  
Tyre TPE 87° Shore (A) dark grey

Conductive <math><10^4\Omega</math>  
Standard tyre for most floor types  
without oil leaking under pressure

Load capacity with wheel 1A: **100 kg**



ball bearing plain bearing

40CA 40GA 41CA 41GA Ø100

50CA 50GA **51CA** 51GA Ø125



**Swivel castor**

Precision ball bearing DIN 625 6203 2RS as swivel bearing  
Body conductive Polyamid 6 GF30



**KSAL**

**Swivel castor with brake**

Precision ball bearing DIN 625 6203 2RS as swivel bearing  
Total lock for wheel and swivel  
Body conductive Polyamid 6 GF30



**KSAF**

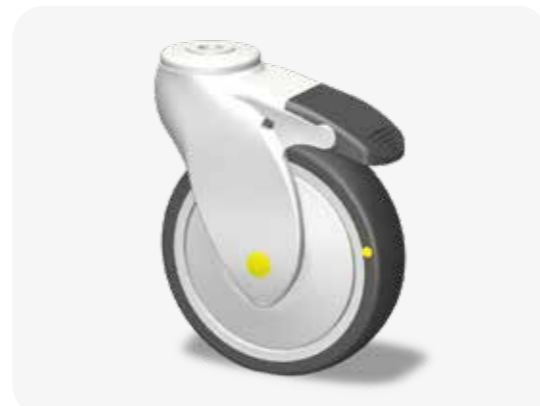
**Swivel castor with direktion lock**

With swivel locking in 180° position  
Precision ball bearing DIN 625 6203 2RS as swivel bearing  
Body conductive Polyamid 6 GF30



**KSAD**

**KSAF - 51CA - L12**



**Available fittings with dimensions**

- L10** Back hole bore Ø10,2 mm
- L12** Back hole bore Ø 12,2 mm
- P77** **Plate 77x67** thickness 3 mm, zinc chromatised bolt hole spacing 61,5/56x51,5/46,4 for screw M8
- P95** **Plate 95x70** thickness 3 mm, zinc chromatised bolt hole spacing 72x52/75 for screw M8, 75x50 for screw M10
- Z28 x45** **Stem Ø28x45** zinc chromatised cross hole M6 19 mm from tube seat
- R...** **Expanding stem** For round tubes dia. from Ø18 to Ø 35 mm, for square tubes size from 18x18 mm do 40x40 mm inside

**VIVAX® section views**

Castor series **VIVAX®**  
Technical details at a look:

- assembly
- types of bearings
- dimensions



section view swivel head with precision ball bearing type 6203 2RS DIN 625



section view wheel with plain bearing



section view wheel with ball bearing type 6202 ZZ

**VIVAX® technical informations**

100	103	43	135	140	32
125	120	46	160	170	32

Castor series



Combine swivel head, wheels und fittings individually, suitable for your demands

**Wheel series 0**

Polypropylen lighth grey  
For soft floors

load capacity with wheel series 0: **100 kg**



ball bearing plain bearing

40CN 40G

50CN 50G

**Wheel series 1**

Hub made from lighth grey Polypropylen  
Tyre TPE 87° Shore (A) dark grey  
Standard tyre suitable for most floor types without oil leaking under pressure

load capacity with wheel series 1: **100 kg**



ball bearing plain bearing

41CN 41G

51CN 51G

**Wheel series 4**

Hub made from Polyamid 6 light grey  
resistance TPU 95° Shore (A) dark grey  
High load capacity and extreme abrasion

load capacity with wheel series 4: **150 kg**



ball bearing plain bearing

44CN 44G

54CN 54G

**Wheel series 6**

Hub made from Polypropylen light grey  
Tyre TPE 50° Shore (A) dark grey  
Soft tyre for floors with edges and interstices Shock and noise absorbing

load capacity with wheel series 6: **80 kg**



ball bearing plain bearing

46CN 46G Ø100

56CN 56G Ø125



**Swivel castor**

Precision ball bearing DIN 625 6203 2RS stainless steel as swivel bearing  
Body made from Polyamid 6 GF30



NKSL

**Swivel castor with brake**

Precision ball bearing DIN 625 6203 2RS stainless steel as swivel bearing  
Total lock for wheel and swivel  
Body made from Polyamid 6 GF30



NKSF

**Swivel castor with direktion lock**

With swivel locking in 180° position  
Precision ball bearing DIN 625 6203 2RS stainless steel as swivel bearing  
Body made from Polyamid 6 GF30



NKSD

**NKSF - 51CN - L12**



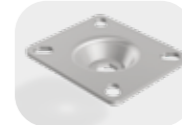
L10



L12



P77



P95



Z28 x45



R...



**Available fittings stainless steel with dimensions**

**Back hole**  
bore Ø10,2 mm

**Back hole**  
bore Ø 12,2 mm

**Plate 77x67**  
thickness 3 mm, zinc chromatised bolt hole spacing 61,5/56x51,5/46,4 for screw M8

**Plate 95x70**  
thickness 3 mm, zinc chromatised bolt hole spacing 72x52/75 for screw M8, 75x50 for screw M10

**Stem Ø28x45**  
zinc chromatised cross hole M6  
19 mm from tube seat

**Expanding stem**  
For round tubes dia. from Ø18 to Ø 35 mm, for square tubes size from 18x18 mm do 40x40 mm inside

**VIVAX® section views**

Castor series **VIVAX®**  
Technical details at a look:

- assembly
- types of bearings
- dimensions



section view swivel head with precision ball bearing type 6203 2RS DIN 625



section view wheel with plain bearing



section view wheel with ball bearing type 6202 ZZ

**VIVAX® technical informations**



100	103	43	135	140	32
125	120	46	160	170	32





**Rolling**

at the speed of life



Industriestraße 8  
D-42499 Hückeswagen

Tel.: +49 2192 9368-0  
Fax: +49 2192 9368-477

Web: [www.colson-rollen.com](http://www.colson-rollen.com)  
E-Mail: [info@colson-rollen.com](mailto:info@colson-rollen.com)